

EL PARAISO, ESTEPONA EAST



bedrooms **5** bathrooms **5** built **655** _{m²} terrace **201** _{m²} plot **1.000** _{m²}

PRIVATE DEVELOPMENT OF ONLY 9 CONTEMPORARY BRAND-NEW VILLAS IN EL PARAÍSO, ESTEPONA

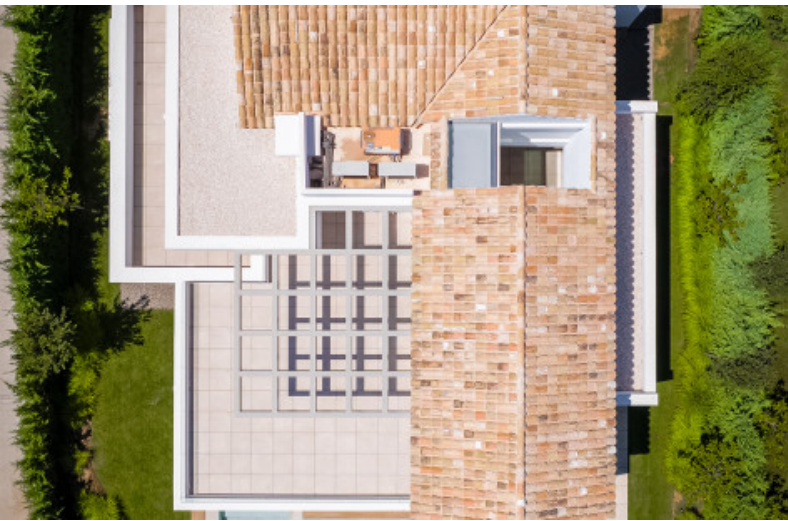
VILLA HENRY

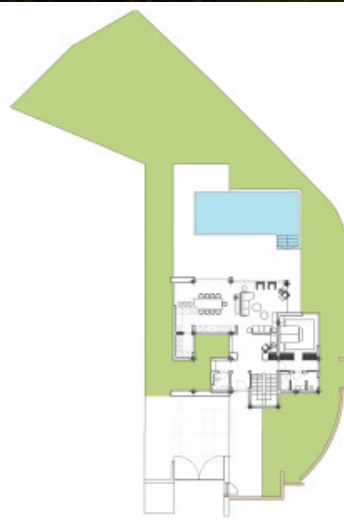
Introducing King's Hills, a collection of nine luxury villas in the well-established residential area of El Paraíso, on the New Golden Mile. Situated between San Pedro and Estepona, within 10 minutes' drive from famous Puerto Banús and Marbella old town.

King's Hills comprises nine detached and independent villas that vary slightly in terms of size, style and distribution, but all built in harmony with the same specifications and finishings. Each villa is built on three floors and has a south-east orientation, comprising on the ground level a spacious and stylish open plan living and dining area with integrated modern and practical kitchen built with high-end German appliances, combining smart technology with warm architectural design.

The living area has access to ...

community -- month garbage 100 € year ibi 800 € year for sale **2.250.000 €**

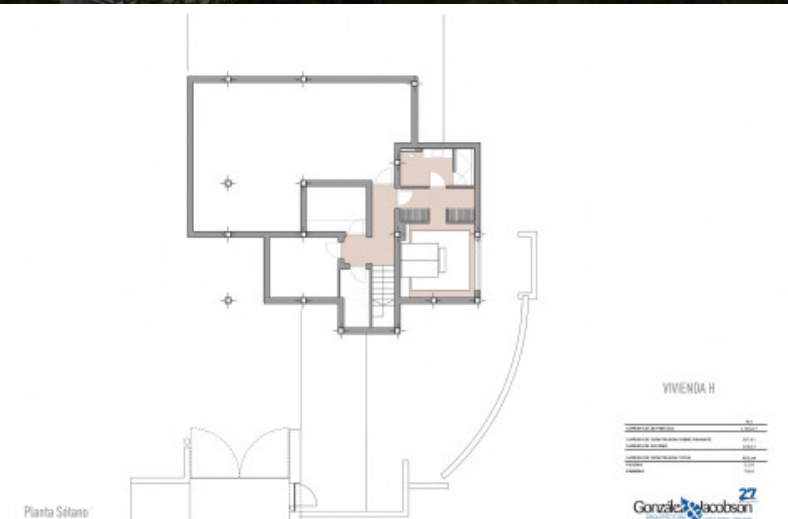




Enplazamiento

VIVIENDA H

Superficie de Construcción	4.200 m ²
Superficie de Construcción Útil	3.500 m ²
Superficie de Cobertura	3.500 m ²
Superficie de Construcción Total	4.200 m ²
Superficie de Construcción Útil	3.500 m ²
Superficie de Cobertura	3.500 m ²
Superficie de Construcción Total	4.200 m ²



Planta Séptimo

VIVIENDA H

Superficie de Construcción	4.200 m ²
Superficie de Construcción Útil	3.500 m ²
Superficie de Cobertura	3.500 m ²
Superficie de Construcción Total	4.200 m ²
Superficie de Construcción Útil	3.500 m ²
Superficie de Cobertura	3.500 m ²
Superficie de Construcción Total	4.200 m ²



Planta Baja

VIVIENDA H

Superficie de Construcción	4.200 m ²
Superficie de Construcción Útil	3.500 m ²
Superficie de Cobertura	3.500 m ²
Superficie de Construcción Total	4.200 m ²
Superficie de Construcción Útil	3.500 m ²
Superficie de Cobertura	3.500 m ²
Superficie de Construcción Total	4.200 m ²



Planta Primera

VIVIENDA H

Superficie de Construcción	4.200 m ²
Superficie de Construcción Útil	3.500 m ²
Superficie de Cobertura	3.500 m ²
Superficie de Construcción Total	4.200 m ²
Superficie de Construcción Útil	3.500 m ²
Superficie de Cobertura	3.500 m ²
Superficie de Construcción Total	4.200 m ²



El Paraiso, Estepona East

Private development of only 9 contemporary brand-new villas in El Paraíso, Estepona

VILLA HENRY

Introducing King's Hills, a collection of nine luxury villas in the well-established residential area of El Paraíso, on the New Golden Mile. Situated between San Pedro and Estepona, within 10 minutes' drive from famous Puerto Banús and Marbella old town.

King's Hills comprises nine detached and independent villas that vary slightly in terms of size, style and distribution, but all built in harmony with the same specifications and finishings. Each villa is built on three floors and has a south-east orientation, comprising on the ground level a spacious and stylish open plan living and dining area with integrated modern and practical kitchen built with high-end German appliances, combining smart technology with warm architectural design.

The living area has access to the terrace and the private garden and private swimming pool. The bedrooms have en-suite bathrooms, electric blinds and wooden floors, and underfloor heating throughout the property, giving the homes a feel of warmth and elegance, combining functionality and comfort. The spacious multi-purpose basement can be fully customised with the possibility to build further bedrooms, gym, games room, study, etc. In addition, there are 2 / 3 covered parking spaces for each villa. All units are completed and ready to move in.

This is Villa Henry.

For further information, interactive floor plans, virtual tours, and payment terms, go to: www.kingshills.com.

Reference	406099	Beds	5	Built m ²	655
Type	Villa	Baths	5	Interior m ²	454
Location	El Paraiso, Estepona East	En-suite Baths	5	Terrace m ²	201
		Guest Toilets	1	Plot m ²	1.000
		Pax	---		
Pool	Private	Community	---	Levels	3
Garden	Private	Garbage	100 € / year	Floor	---
Garage	Carport	IBI	800 € / year	Orientation	South/East
Parking slots	2	Construct Year	2022	EPC	In Progress

For sale

2.250.000 €

Sale price does not include costs or taxes. Additional costs for the buyer: inscription and notary fees, ITP 7% or, alternatively 10% VAT and AJD (1.2% on the purchase price) on new properties and subject to some requisites to be met. This info is subject to errors, omissions, modifications, prior sale or withdrawal from the market. Information sheet available, Decree 218/2005 Oct. 11th.